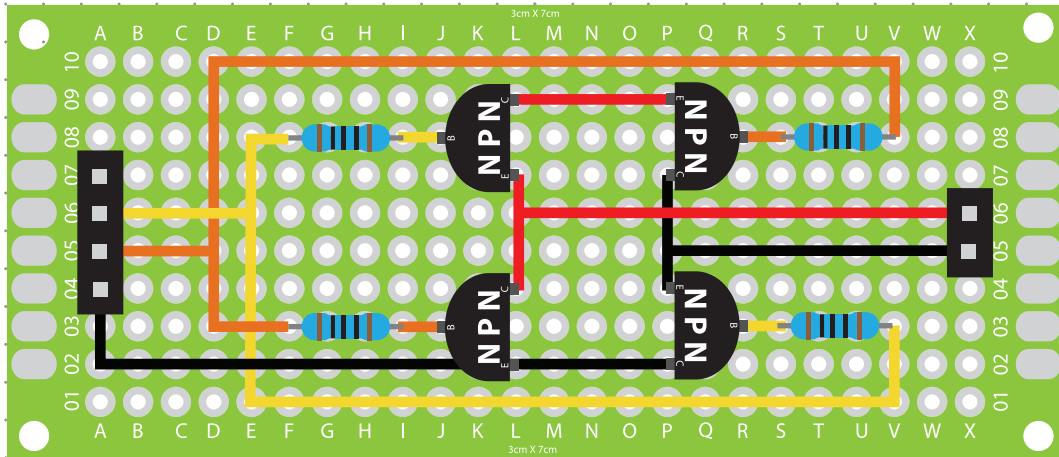
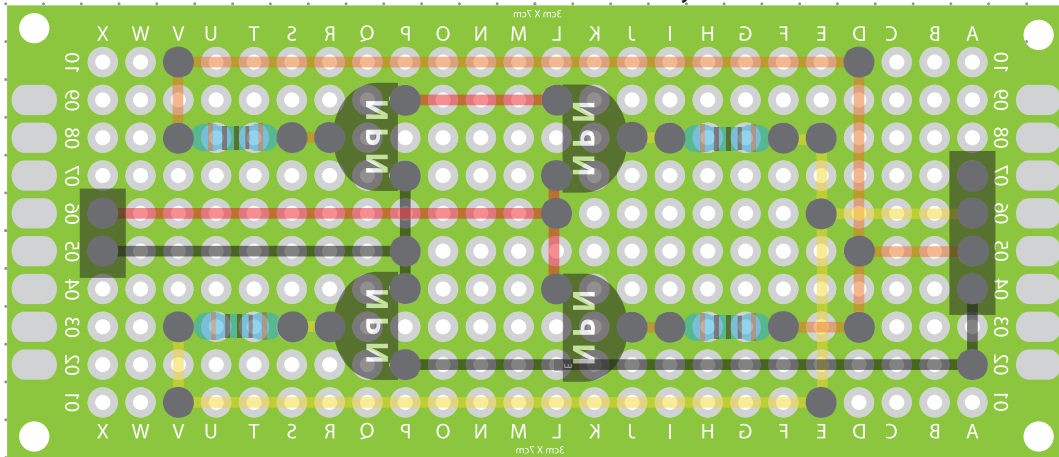


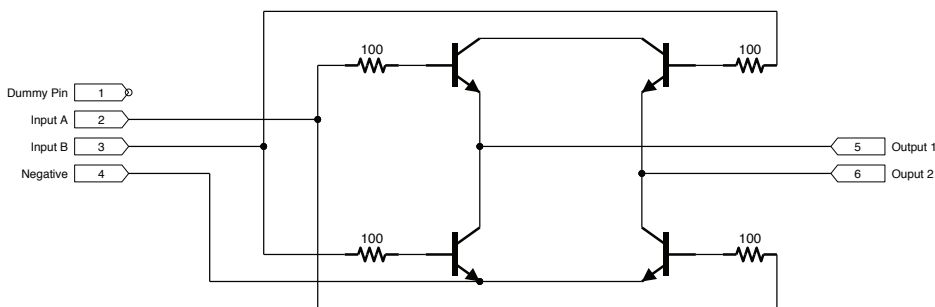
Front View: Circuit Board Layout



Back View: Circuit Board Layout



Electrical Schematics



Materials:

- 1 3x7cm Circuit Board
- 4 Bridge Pins
- 1 2-Pin Female Bridge
- 4 S9013 NPN Transistor
- 4 100Ω Resistor
- 1 75 cm Assorted Wires

Notes: This circuit design can operate multiple LEDs but is not capable of powering a motor (attaching a motor to this circuit design may permanently damage the transistors).

Project: Simplified H-Bridge

Client:

5mm Dot Grid

Designer: Scott A. Campbell

Builder:

Scale:

2:1