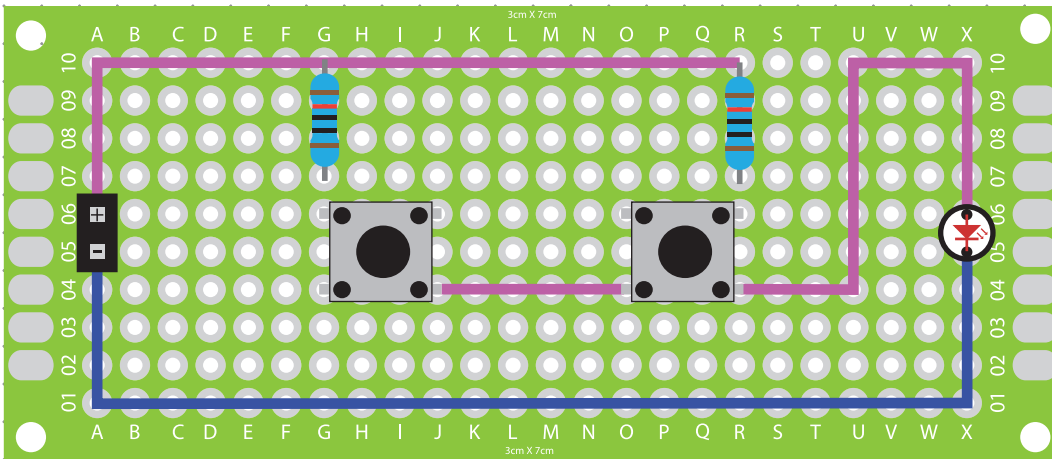
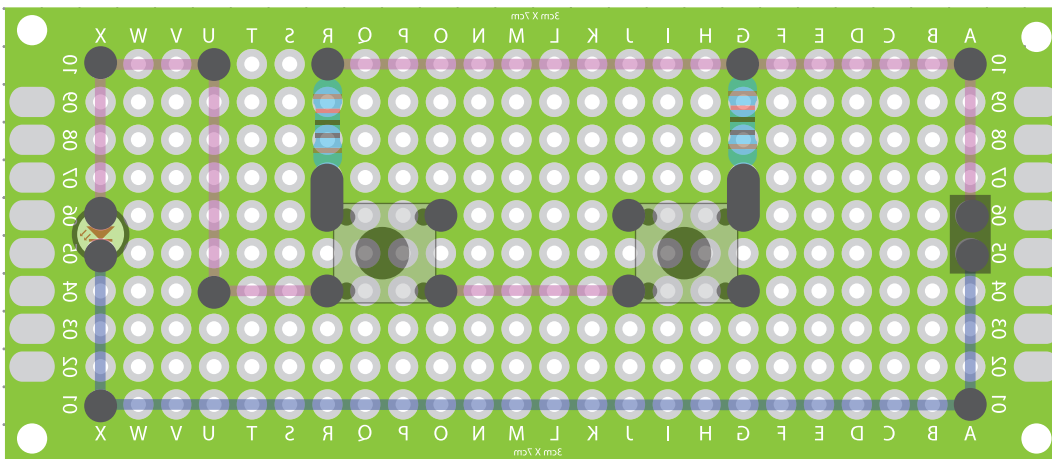


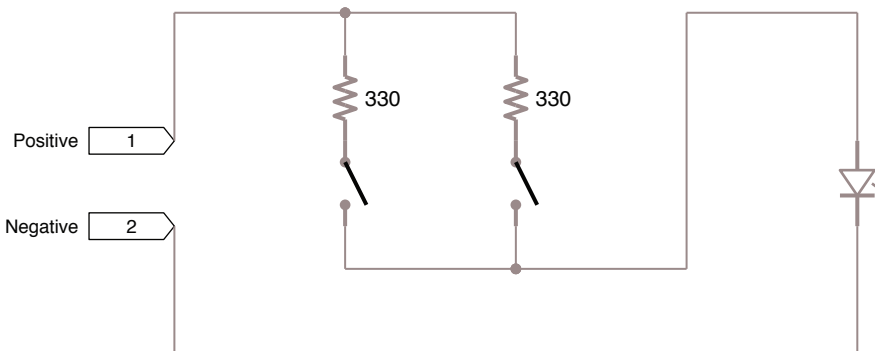
Front View: Circuit Board Layout



Back View: Circuit Board Layout



OR Gate



Materials:

- 1 3x7cm circuit board
- 5 330r resistor
- 2 Pin type bridge connector
- 2 6x7mm SPST push switch
- 1 15cm length of purple wire
- 1 15cm length of blue wire
- 1 Blue LED

Project: Push Switch OR Gate

Client:

5mm Dot Grid

Designer: Scott A. Campbell

Builder:

Scale:

2:1