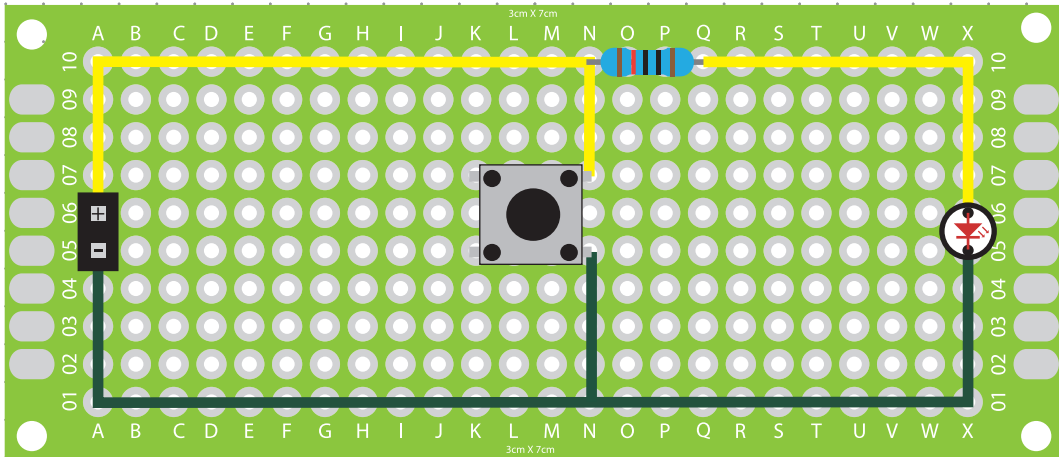
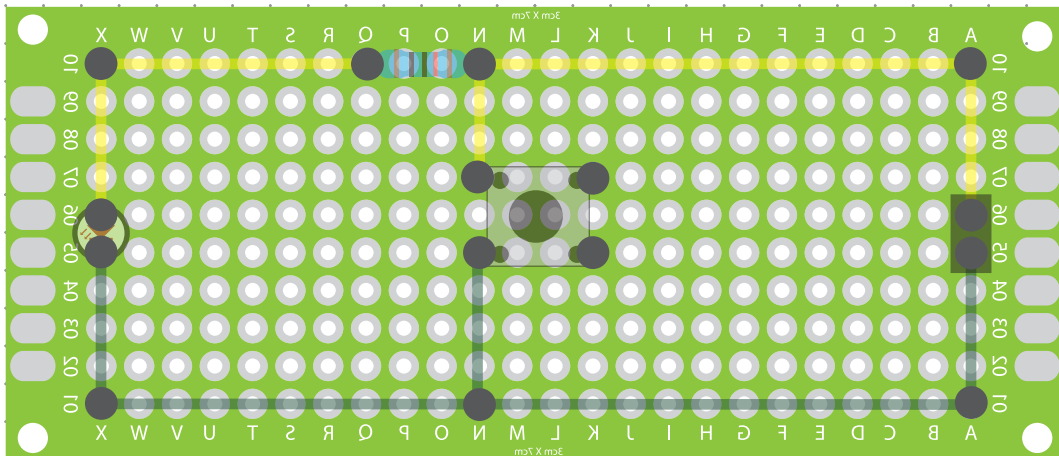


Front View: Circuit Board Layout



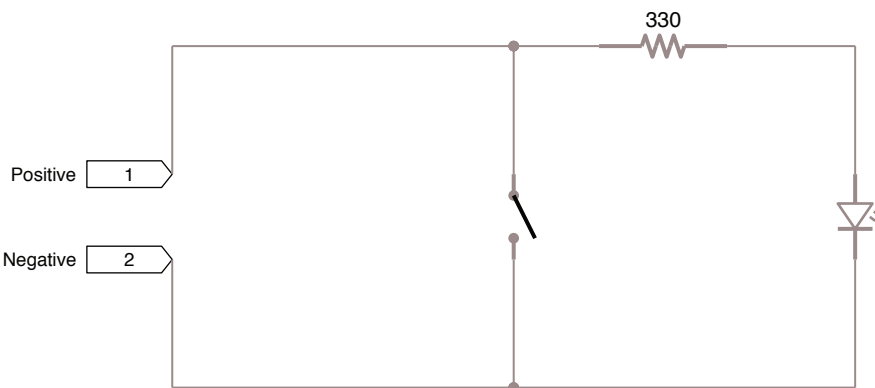
Back View: Circuit Board Layout



Not Gate

Materials:

- 1 3x7cm circuit board
- 1 330r resistor
- 2 Pin type bridge connector
- 1 6x7mm SPST push switch
- 1 15cm length of yellow wire
- 1 15cm length of green wire
- 1 Green LED



Project: Push Switch NOT Gate

Client:

5mm Dot Grid

Designer: Scott A. Campbell

Builder:

Scale:

2:1