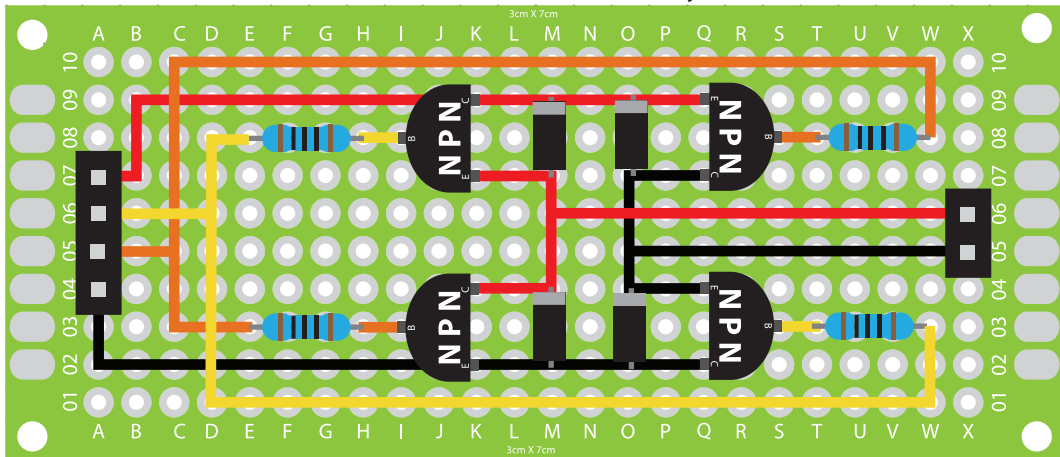
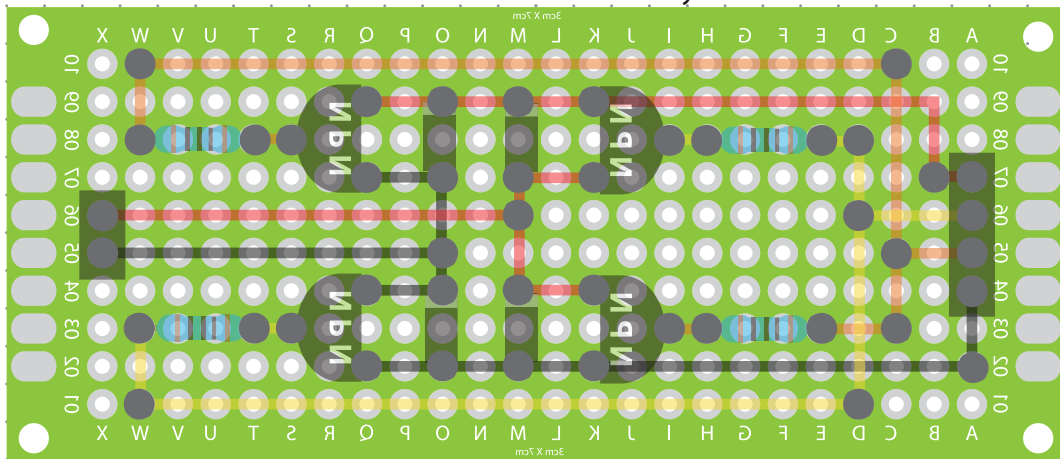


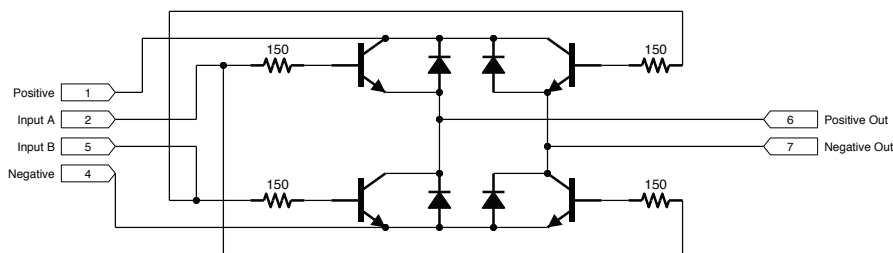
### Front View: Circuit Board Layout



### Back View: Circuit Board Layout



### Electrical Schematics



### Materials:

- 1 3x7cm Circuit Board
- 4 Bridge Pins
- 1 2-Pin Female Bridge
- 4 N4001 Diodes
- 4 S9013 NPN Transistor
- 4 100Ω Resistor
- 1 75 cm Assorted Wires

**Notes:** This circuit can drive a small motor (i.e. 10rpm geared motor that operates between 5~9v)

Project: H-Bridge (Inset Circuit Design)

Client:

5mm Dot Grid

Designer: Scott A. Campbell

Builder:

Scale:

2:1