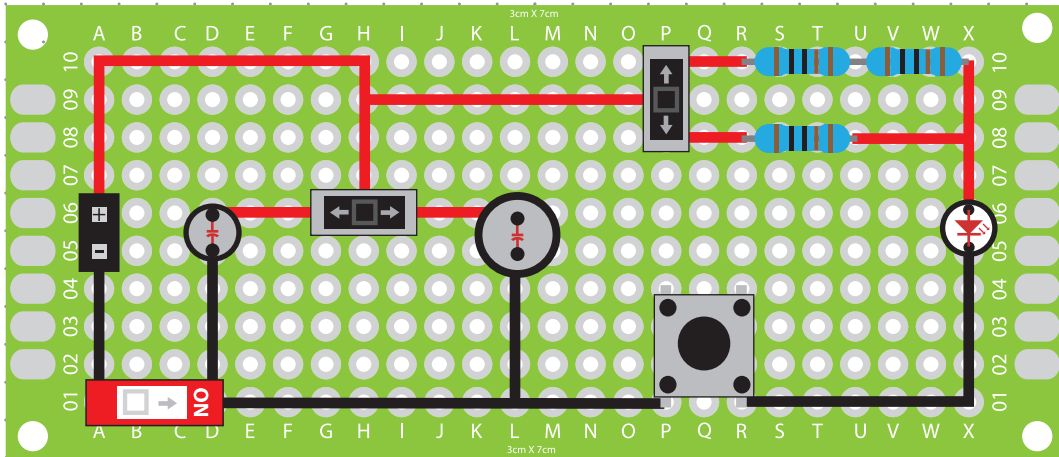
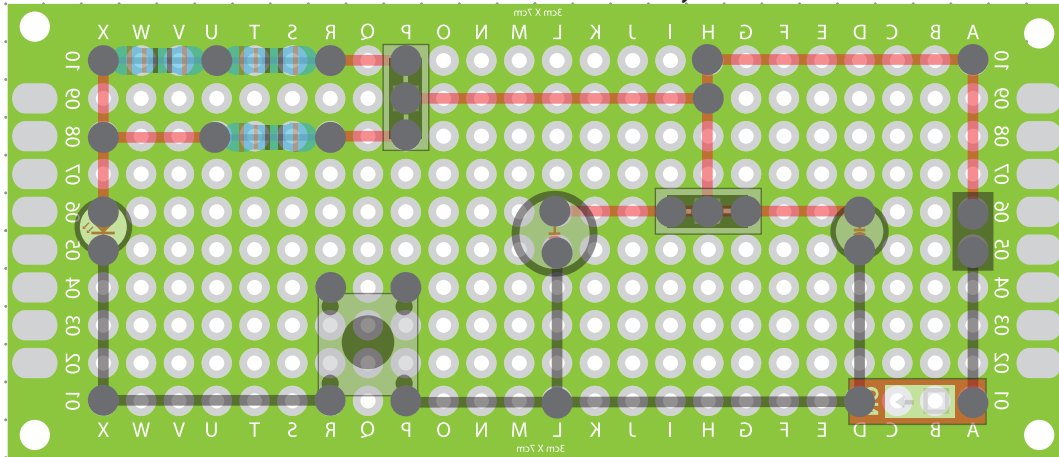


Front View: Circuit Board Layout

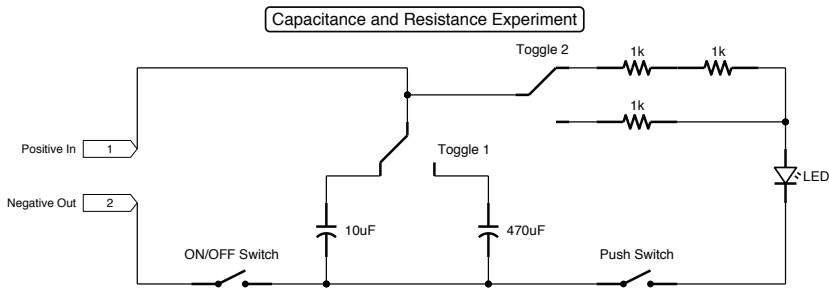


Back View: Circuit Board Layout



Electrical Schematics

Materials:



- 1 3x7cm Circuit Board
- 2 Bridge Pin Connectors
- 3 1K Resistor
- 2 Two Way Toggle Switch
- 1 ON/OFF Switch
- 1 10uF (1.0A 25V ) Capacitor
- 1 470uF (1.0A 25V) Capacitor
- 1 LED Light (Any Colour)
- 1 25cm Length of Red Wire
- 1 15cm Length of Black Wire

Project: Capacitance & Resistance Experiment

Client:

5mm Dot Grid

Designer: Scott A. Campbell

Builder:

Scale:

2:1