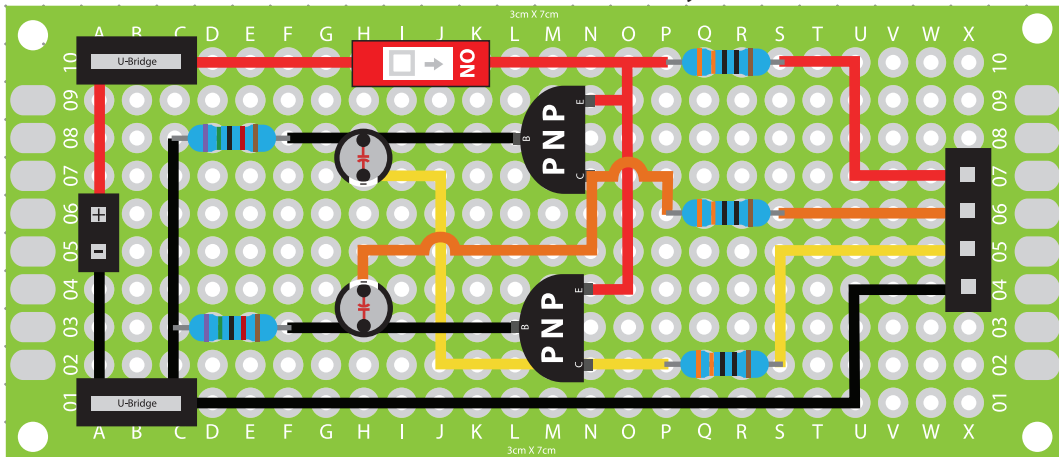
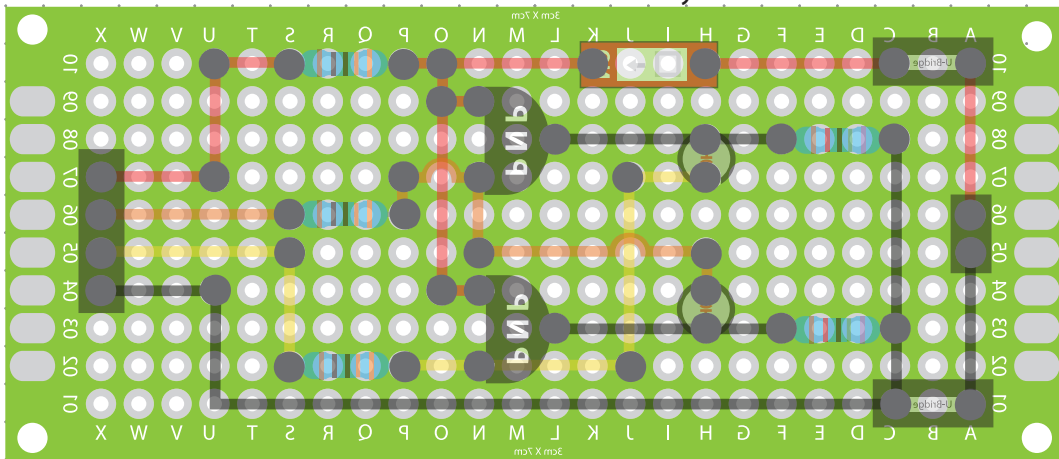


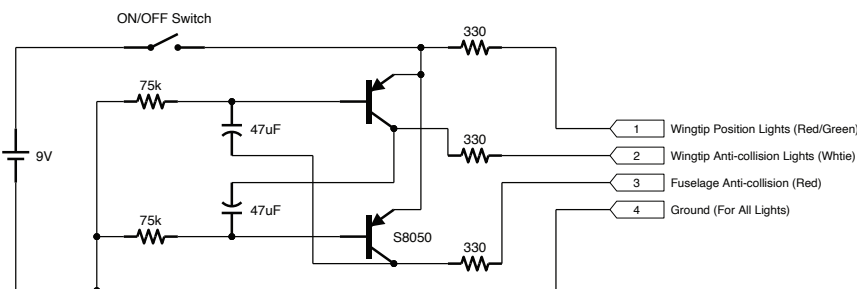
Front View: Circuit Board Layout



Back View: Circuit Board Layout



Electrical Schematics



Materials:

- 1 3x7cm Circuit Board
- 1 9V Battery Clip / Bridge Pins
- 1 100cm Assorted Wires
- 1 On/Off Switch
- 2 U-Bridge Connectors
- 1 4 Pin Female Bridge
- 2 S8050 PNP Transistors
- 2 47uf 16V Capacitors
- 2 75k Resistors
- 3 330r Resistors

Project: Aviation Safety Lights (Complex)	Client:	5mm Dot Grid Scale: 2:1
Designer: Scott A. Campbell	Builder:	