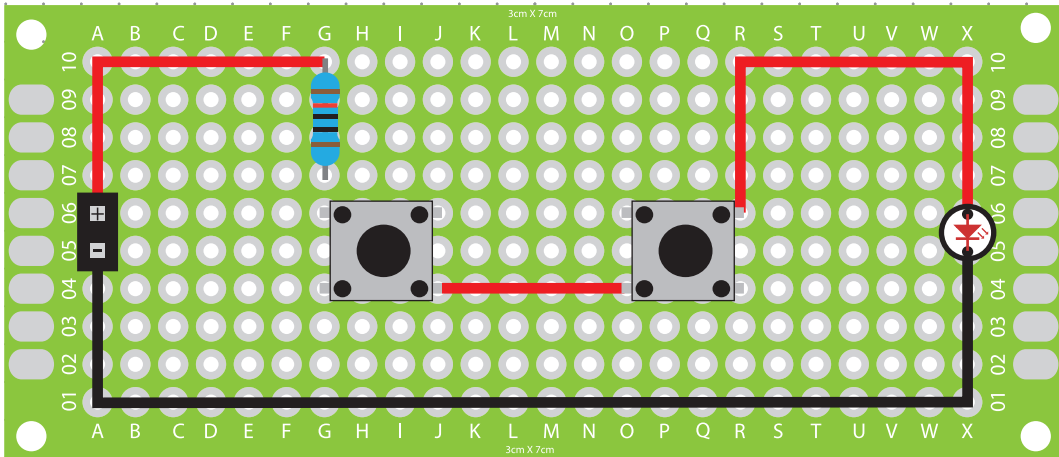
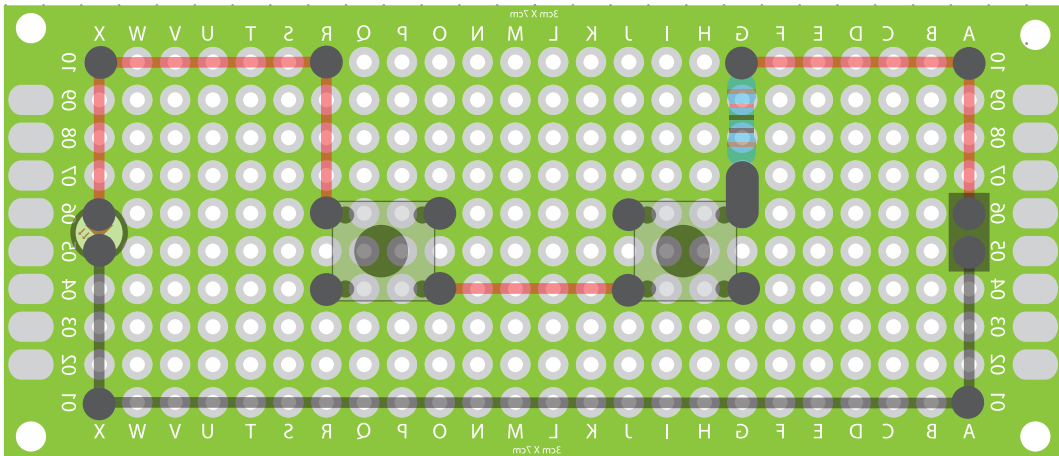


Front View: Circuit Board Layout

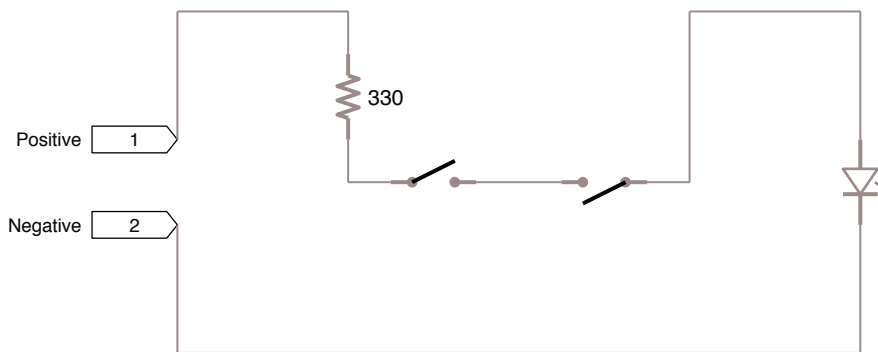


Back View: Circuit Board Layout



AND Gate

Materials:



- 1 3x7cm circuit board
- 5 330r resistor
- 2 Pin type bridge connector
- 2 6x7mm SPST push switch
- 1 15cm length of red wire
- 1 15cm length of black wire
- 1 Red LED

Project: Push Switch AND Gate

Client:

5mm Dot Grid

Designer: Scott A. Campbell

Builder:

Scale:

2:1