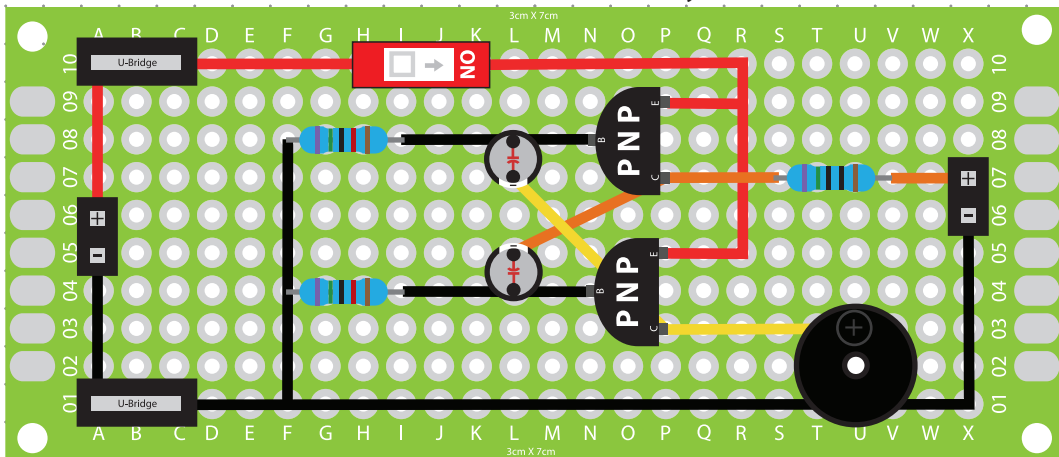
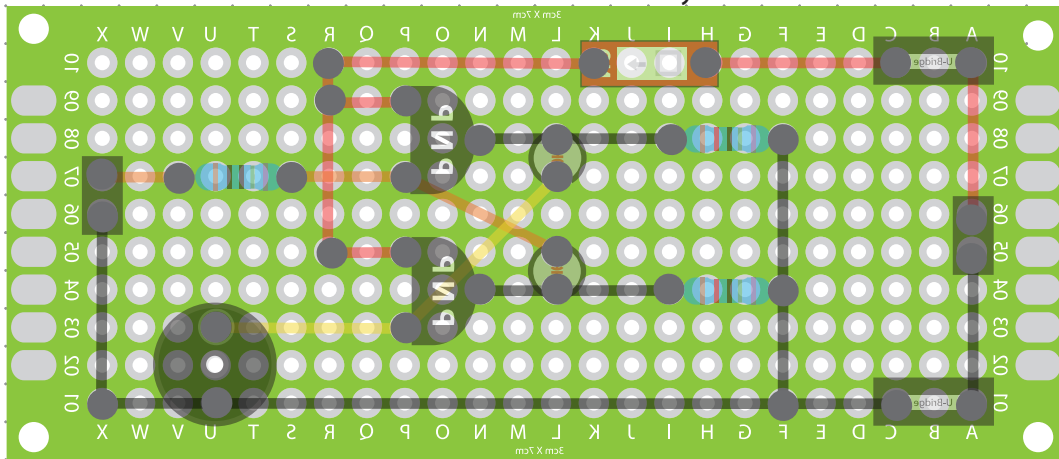


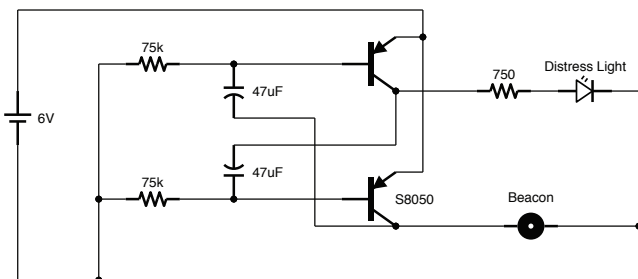
Front View: Circuit Board Layout



Back View: Circuit Board Layout



Electrical Schematics



Materials:

- 1 3x7cm Circuit Board
- 1 Bridge Pins / 6V Battery Pack
- 2 U-Bridge Connectors
- 1 75 cm Assorted Wires
- 1 White LED / Female Bridge
- 2 S8050 PNP Transistors
- 2 47uf 16V Capacitors
- 2 75k Resistors
- 1 750r Resistor
- 1 Buzzer

| | | |
|--|----------|-------------------------------|
| Project: 6V Distress / Recovery Beacon | Client: | 5mm Dot Grid Scale: 2:1 |
| Designer: Scott A. Campbell | Builder: | |